

Load Holding, Pilot-to-open Check Cartridges

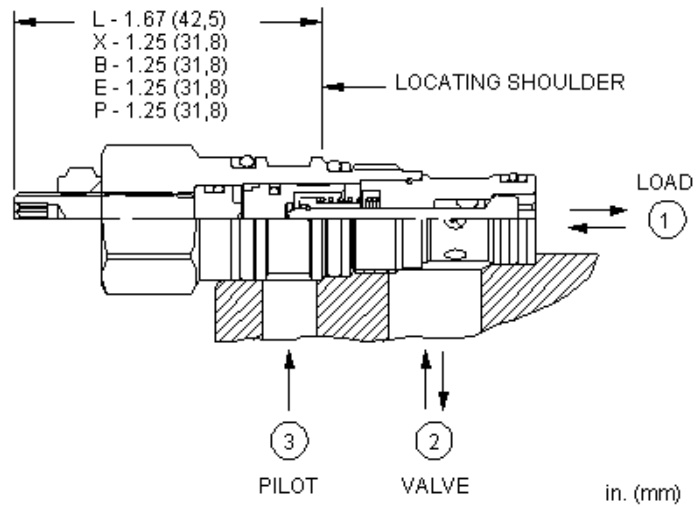
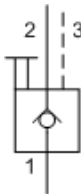
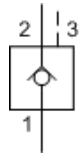
*Powered by Sun **QuickPrint**,
your on-demand, customized catalogue solution.*

This information is subject to change without notice. Visit www.sunhydraulics.com for complete and up to date information.

CKBB	Pilot-to-open check valve with standard pilot1
CKBG	Flush mount pilot-to-open check valve with sealed pilot2
CKCB	Pilot-to-open check valve with standard pilot3
CKEB	Pilot-to-open check valve with standard pilot4
CKGB	Pilot-to-open check valve with standard pilot5
CKIB	Pilot-to-open check valve with standard pilot6
CKBD	Pilot-to-open check valve with sealed pilot7
CKCD	Pilot-to-open check valve with sealed pilot8
CKED	Pilot-to-open check valve with sealed pilot9
CKGD	Pilot-to-open check valve with sealed pilot10
CKID	Pilot-to-open check valve with sealed pilot11
CVCV	Vented pilot-to-open check valve12
CVEV	Vented pilot-to-open check valve13
CVGV	Vented pilot-to-open check valve14
CVIV	Vented pilot-to-open check valve15
CKCV	Vented pilot-to-open check valve - atmospherically referenced16
CKEV	Vented pilot-to-open check valve - atmospherically referenced17
CKGV	Vented pilot-to-open check valve - atmospherically referenced18
CKIV	Vented pilot-to-open check valve - atmospherically referenced19
CNCE	Pilot-to-open check valve with bypass orifice20
CNEE	Pilot-to-open check valve with bypass orifice21
CNGE	Pilot-to-open check valve with bypass orifice22
CKCR	5:1 pilot ratio, pilot-to-open check valve with standard pilot23

CKCS	5:1 pilot ratio, pilot-to-open check valve with sealed pilot24
------	--	---------

Series	Ports	Cavities
Series Z Cartridges 3/8-24 UNF Cartridge Thread 5 mm Valve Hex Size 11 - 14 Nm Valve Installation Torque	3-Port	T-382A
Series P Cartridges M16 Cartridge Thread 22,2 mm Valve Hex Size 27 - 33 Nm Valve Installation Torque	2-Port 2-Port (Deep) 3-Port	T-8A T-8DP T-9A
Series 0 Cartridges M16 Cartridge Thread 19,1 mm Valve Hex Size 25,4 mm Valve Hex Size 27 - 33 Nm Valve Installation Torque	2-Port 2-Port (Deep) 3-Port 3-Port 4-Port	T-162A T-162DP T-150A T-163A T-30A
Series 1 Cartridges M20 Cartridge Thread 22,2 mm Valve Hex Size 41 - 47 Nm Valve Installation Torque	2-Port 2-Port 3-Port 4-Port 4-Port 6-Port	T-10A T-13A T-11A T-21A T-31A T-61A
Series 2 Cartridges 1"-14 UNS Cartridge Thread 28,6 mm Valve Hex Size 61 - 68 Nm Valve Installation Torque	2-Port 2-Port 3-Port 4-Port 4-Port 4-Port (Dual path) 6-Port 6-Port	T-3A T-5A T-2A T-22A T-32A T-52AD T-52A T-62A
Series 3 Cartridges M36 Cartridge Thread 31,8 mm Valve Hex Size 203 - 217 Nm Valve Installation Torque	2-Port 3-Port 4-Port 4-Port 4-Port (Dual path) 6-Port 6-Port	T-16A T-17A T-23A T-33A T-53AD T-53A T-63A
Series 4 Cartridges M48 Cartridge Thread 41,3 mm Valve Hex Size 474 - 508 Nm Valve Installation Torque	2-Port 2-Port (Undercut) 3-Port 3-Port (Undercut) 4-Port 4-Port (Undercut) 4-Port 4-Port (Dual path) 6-Port 6-Port	T-18A T-18AU T-19A T-19AU T-24A T-24AU T-34A T-54AD T-54A T-64A



This valve is a pilot to open check valve. It has a non-sealed pilot, a steel seat, and is non-vented. It allows free flow from the valve (port 2) to the load (port 1) and blocks flow in the opposite direction. Pressure at the pilot (port 3) will open the valve from port 1 to port 2. Pilot pressure needed at port 3 to open the valve is directly proportional to the load pressure at port 1. Pressure at port 2 directly opposes pilot pressure.

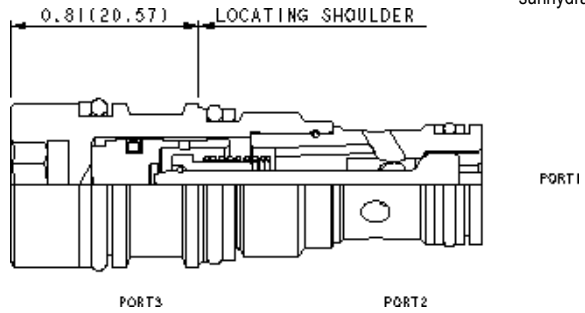
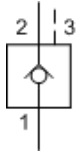
TECHNICAL DATA

NOTE: DATA MAY VARY BY CONFIGURATION. SEE CONFIGURATION SECTION.

Pilot Ratio	3:1
Maximum Operating Pressure	350 bar
Maximum Valve Leakage at 110 SUS (24 cSt)	0,07 cc/min.
Seal kit - Cartridge	Buna: 990163007
Seal kit - Cartridge	EPDM: 990163014
Seal kit - Cartridge	Polyurethane: 990163002
Seal kit - Cartridge	Viton: 990163006

CONFIGURATION OPTIONS
Model Code Example: CKBBXCN

CONTROL	(X) CRACKING PRESSURE	(C) SEAL MATERIAL	(N) MATERIAL/COATING
X Standard Pilot	C 30 psi (2 bar)	N Buna-N	Standard Material/Coating
L Manual Load Release	E 75 psi (5 bar)	E EPDM	/AP Stainless Steel, Passivated
		V Viton	/LH Mild Steel, Zinc-Nickel



This valve is a pilot to open check valve. It has a sealed pilot, a steel seat, and is non-vented. It allows free flow from the valve (port 2) to the load (port 1) and blocks flow in the opposite direction. Pressure at the pilot (port 3) will open the valve from port 1 to port 2. Pilot pressure needed at port 3 to open the valve is directly proportional to the load pressure at port 1. Pressure at port 2 directly opposes pilot pressure.

TECHNICAL DATA

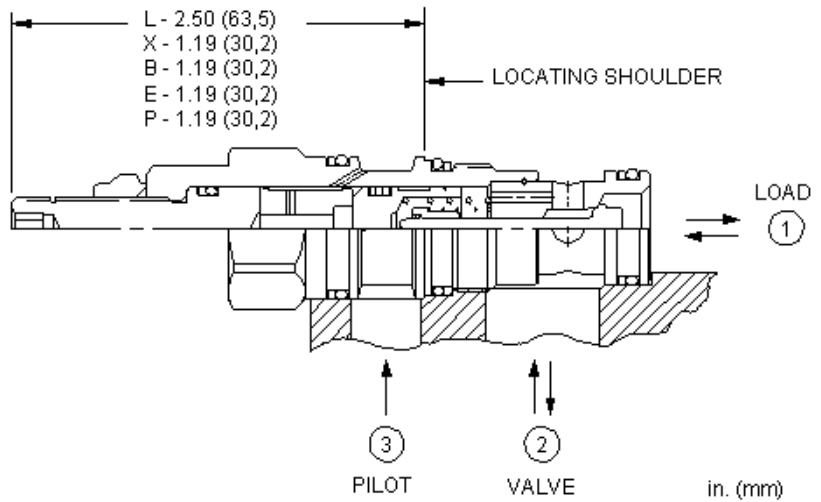
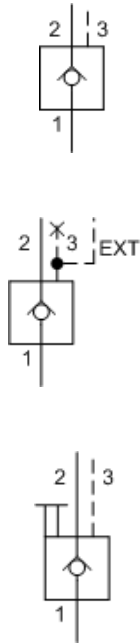
NOTE: DATA MAY VARY BY CONFIGURATION. SEE CONFIGURATION SECTION.

Pilot Ratio	3:1
Maximum Operating Pressure	350 bar
Maximum Valve Leakage at 110 SUS (24 cSt)	0,07 cc/min.
Valve Internal Hex Size	8 mm
Seal kit - Cartridge	Buna: 990163007
Seal kit - Cartridge	Polyurethane: 990163002
Seal kit - Cartridge	Viton: 990163006

CONFIGURATION OPTIONS

Model Code Example: **CKBGXCN**

CONTROL	(X)	BIAS PRESSURE	(C)	SEAL MATERIAL	(N)	MATERIAL/COATING
X Not Adjustable, Standard Hydraulic Pilot		C 30 psi (2 bar) E 75 psi (5 bar)		N Buna-N V Viton		Standard Material/Coating /AP Stainless Steel, Passivated



This valve is a pilot to open check valve. It has a non-sealed pilot, a steel seat, and is non-vented. It allows free flow from the valve (port 2) to the load (port 1) and blocks flow in the opposite direction. Pressure at the pilot (port 3) will open the valve from port 1 to port 2. Pilot pressure needed at port 3 to open the valve is directly proportional to the load pressure at port 1. Pressure at port 2 directly opposes pilot pressure.

TECHNICAL DATA

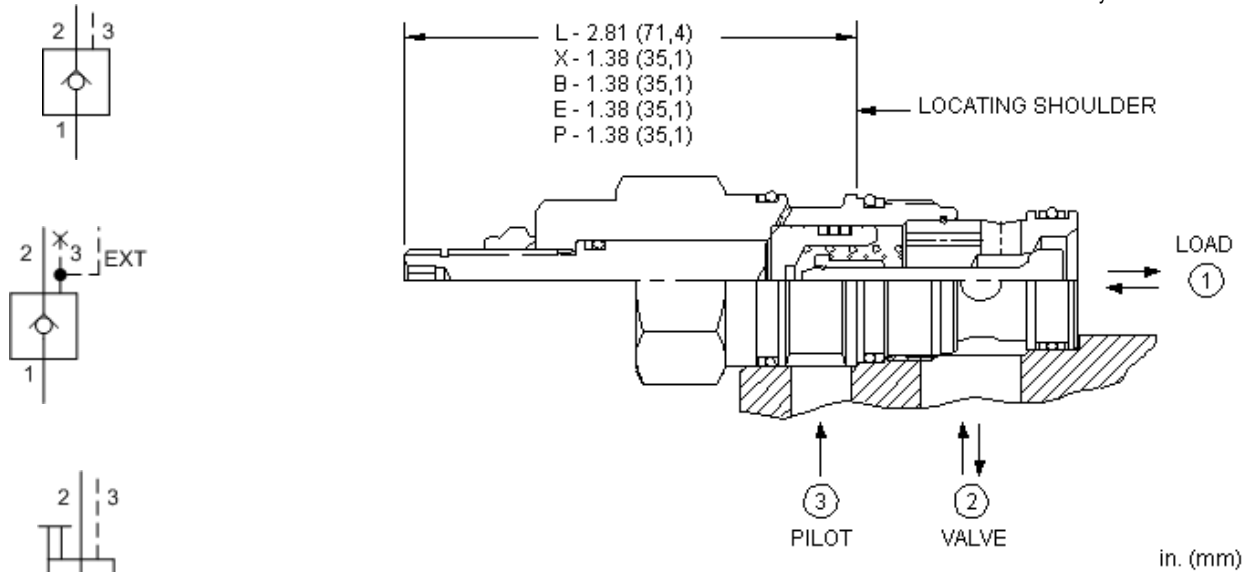
NOTE: DATA MAY VARY BY CONFIGURATION. SEE CONFIGURATION SECTION.

Pilot Ratio	3:1
Maximum Operating Pressure	350 bar
Maximum Valve Leakage at 110 SUS (24 cSt)	0,07 cc/min.
Seal kit - Cartridge	Buna: 990011007
Seal kit - Cartridge	EPDM: 990011014
Seal kit - Cartridge	Polyurethane: 990011002
Seal kit - Cartridge	Viton: 990011006

CONFIGURATION OPTIONS

Model Code Example: CKCBXCN

CONTROL	(X) CRACKING PRESSURE	(C) SEAL MATERIAL	(N) MATERIAL/COATING
X Standard Pilot	C 30 psi (2 bar)	N Buna-N	Standard Material/Coating
L Manual Load Release	A 4 psi (0,3 bar)	E EPDM	/AP Stainless Steel, Passivated
	B 15 psi (1 bar)	V Viton	/LH Mild Steel, Zinc-Nickel
	D 50 psi (3,5 bar)		
	E 75 psi (5 bar)		
	F 100 psi (7 bar)		



This valve is a pilot to open check valve. It has a non-sealed pilot, a steel seat, and is non-vented. It allows free flow from the valve (port 2) to the load (port 1) and blocks flow in the opposite direction. Pressure at the pilot (port 3) will open the valve from port 1 to port 2. Pilot pressure needed at port 3 to open the valve is directly proportional to the load pressure at port 1. Pressure at port 2 directly opposes pilot pressure.

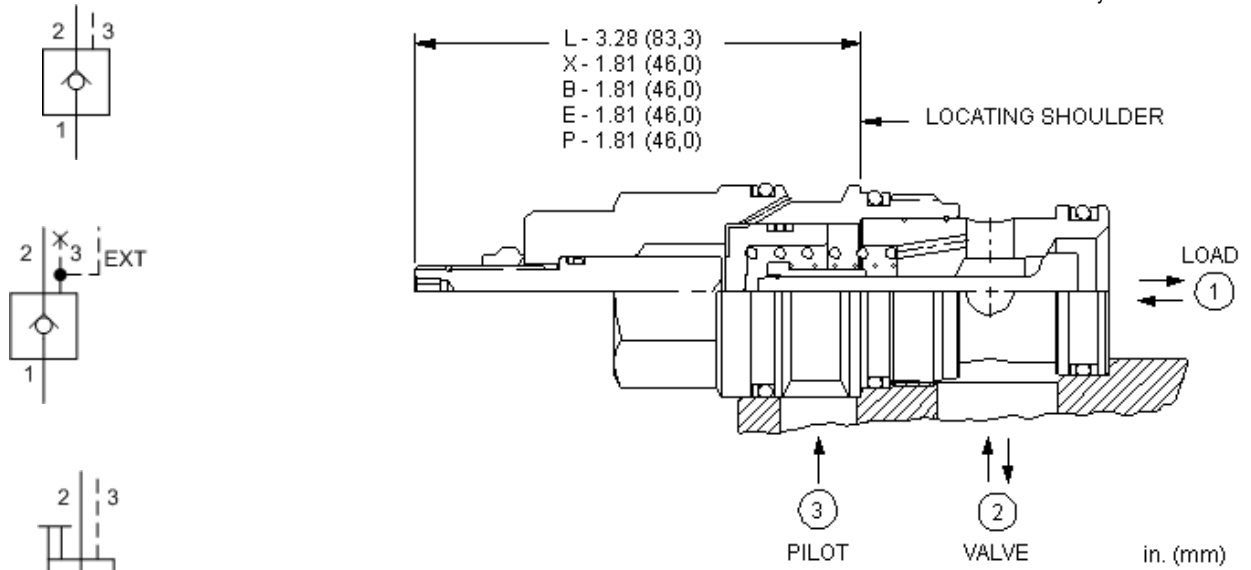
TECHNICAL DATA

NOTE: DATA MAY VARY BY CONFIGURATION. SEE CONFIGURATION SECTION.

Pilot Ratio	3:1
Maximum Operating Pressure	350 bar
Maximum Valve Leakage at 110 SUS (24 cSt)	0,07 cc/min.
Seal kit - Cartridge	Buna: 990202007
Seal kit - Cartridge	EPDM: 990202014
Seal kit - Cartridge	Polyurethane: 990002002
Seal kit - Cartridge	Viton: 990202006

CONFIGURATION OPTIONS
Model Code Example: CKEBXCN

CONTROL	(X) CRACKING PRESSURE	(C) SEAL MATERIAL	(N) MATERIAL/COATING
X Standard Pilot	C 30 psi (2 bar)	N Buna-N	Standard Material/Coating
L Manual Load Release	A 4 psi (0,3 bar)	E EPDM	/AP Stainless Steel, Passivated
	B 15 psi (1 bar)	V Viton	/LH Mild Steel, Zinc-Nickel
	D 50 psi (3,5 bar)		
	E 75 psi (5 bar)		
	F 100 psi (7 bar)		



This valve is a pilot to open check valve. It has a non-sealed pilot, a steel seat, and is non-vented. It allows free flow from the valve (port 2) to the load (port 1) and blocks flow in the opposite direction. Pressure at the pilot (port 3) will open the valve from port 1 to port 2. Pilot pressure needed at port 3 to open the valve is directly proportional to the load pressure at port 1. Pressure at port 2 directly opposes pilot pressure.

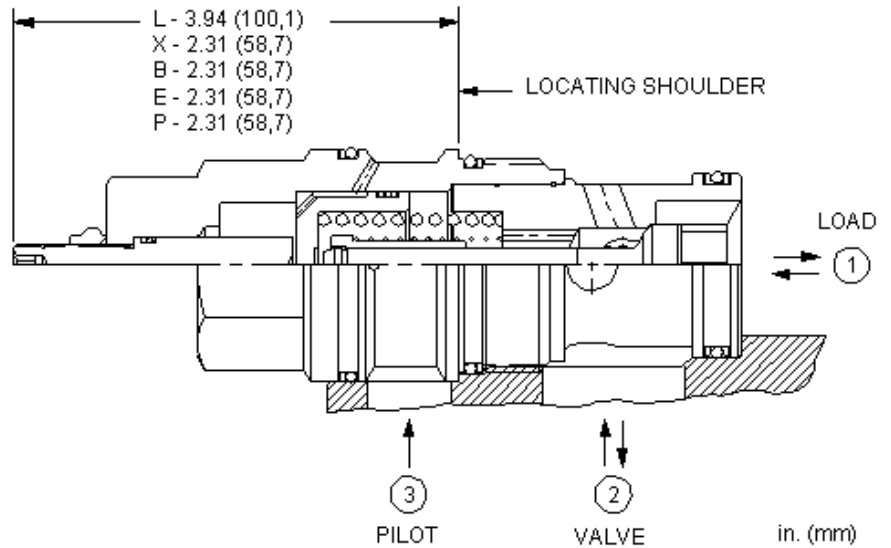
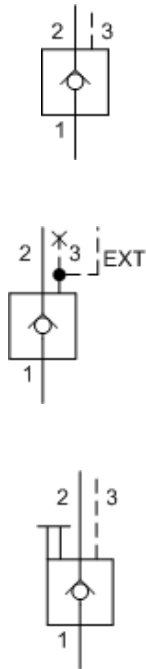
TECHNICAL DATA

NOTE: DATA MAY VARY BY CONFIGURATION. SEE CONFIGURATION SECTION.

Pilot Ratio	3:1
Maximum Operating Pressure	350 bar
Maximum Valve Leakage at 110 SUS (24 cSt)	0,07 cc/min.
Seal kit - Cartridge	Buna: 990017007
Seal kit - Cartridge	EPDM: 990017014
Seal kit - Cartridge	Polyurethane: 990017002
Seal kit - Cartridge	Viton: 990017006

CONFIGURATION OPTIONS
Model Code Example: CKGBXCN

CONTROL	(X) CRACKING PRESSURE	(C) SEAL MATERIAL	(N) MATERIAL/COATING
X Standard Pilot	C 30 psi (2 bar)	N Buna-N	Standard Material/Coating
L Manual Load Release	A 4 psi (0,3 bar)	E EPDM	/AP Stainless Steel, Passivated
	B 15 psi (1 bar)	V Viton	/LH Mild Steel, Zinc-Nickel
	D 50 psi (3,5 bar)		
	E 75 psi (5 bar)		
	F 100 psi (7 bar)		



This valve is a pilot to open check valve. It has a non-sealed pilot, a steel seat, and is non-vented. It allows free flow from the valve (port 2) to the load (port 1) and blocks flow in the opposite direction. Pressure at the pilot (port 3) will open the valve from port 1 to port 2. Pilot pressure needed at port 3 to open the valve is directly proportional to the load pressure at port 1. Pressure at port 2 directly opposes pilot pressure.

TECHNICAL DATA

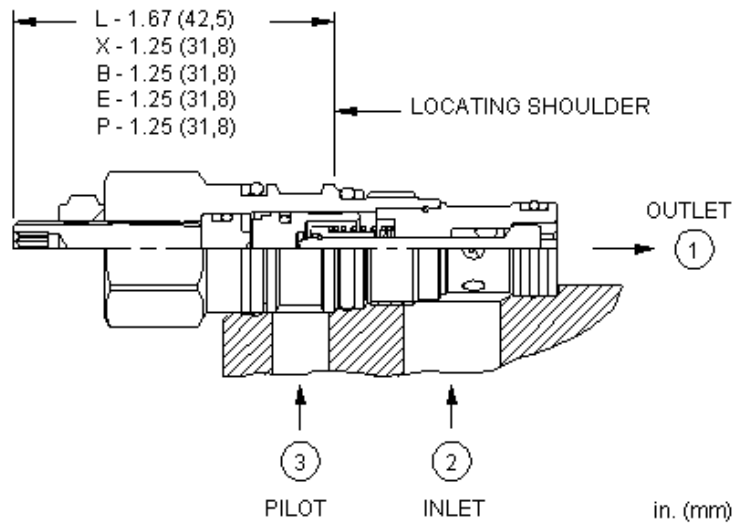
NOTE: DATA MAY VARY BY CONFIGURATION. SEE CONFIGURATION SECTION.

Pilot Ratio	3:1
Maximum Operating Pressure	350 bar
Maximum Valve Leakage at 110 SUS (24 cSt)	0,07 cc/min.
Seal kit - Cartridge	Buna: 990019007
Seal kit - Cartridge	EPDM: 990019014
Seal kit - Cartridge	Polyurethane: 990019002
Seal kit - Cartridge	Viton: 990019006

CONFIGURATION OPTIONS

Model Code Example: **CKIBXCN**

CONTROL	(X) CRACKING PRESSURE	(C) SEAL MATERIAL	(N) MATERIAL/COATING
X Standard Pilot	C 30 psi (2 bar)	N Buna-N	Standard Material/Coating
L Manual Load Release	A 4 psi (0,3 bar)	E EPDM	/AP Stainless Steel, Passivated
	B 15 psi (1 bar)	V Viton	/LH Mild Steel, Zinc-Nickel
	D 50 psi (3,5 bar)		
	E 75 psi (5 bar)		
	F 100 psi (7 bar)		



This valve is a pilot to open check valve. It has a sealed pilot, a steel seat, and is non-vented. It allows free flow from the valve (port 2) to the load (port 1) and blocks flow in the opposite direction. Pressure at the pilot (port 3) will open the valve from port 1 to port 2. Pilot pressure needed at port 3 to open the valve is directly proportional to the load pressure at port 1. Pressure at port 2 directly opposes pilot pressure.

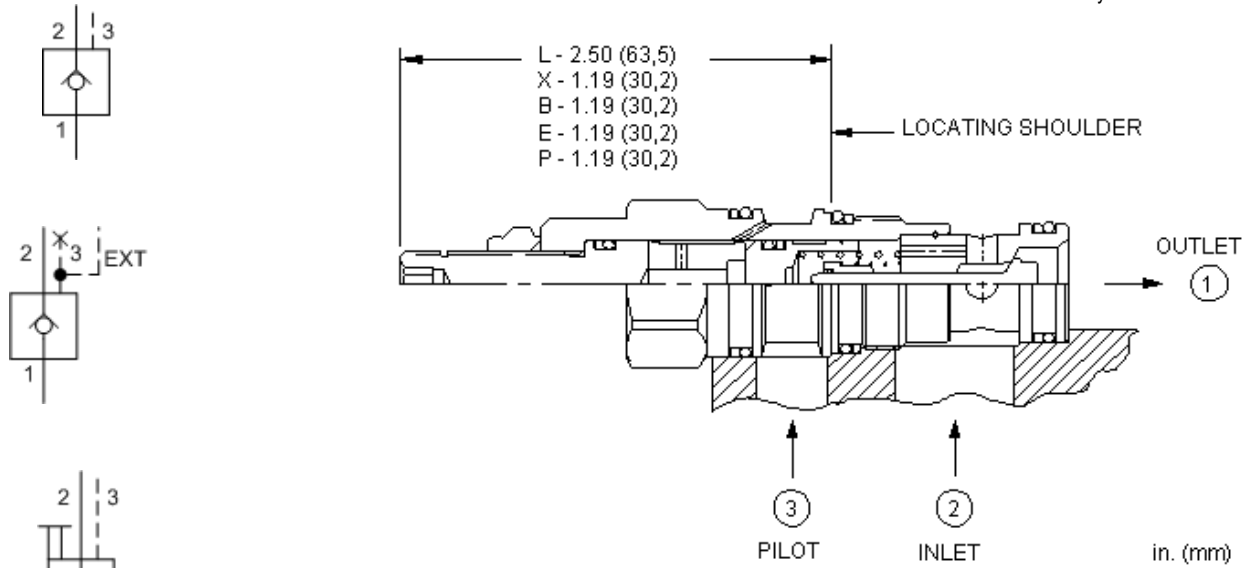
TECHNICAL DATA

NOTE: DATA MAY VARY BY CONFIGURATION. SEE CONFIGURATION SECTION.

Pilot Ratio	3:1
Maximum Operating Pressure	350 bar
Maximum Valve Leakage at 110 SUS (24 cSt)	0,07 cc/min.
Seal kit - Cartridge	Buna: 990163007
Seal kit - Cartridge	EPDM: 990163014
Seal kit - Cartridge	Polyurethane: 990163002
Seal kit - Cartridge	Viton: 990163006

CONFIGURATION OPTIONS
Model Code Example: CKBDXCN

CONTROL	(X) CRACKING PRESSURE	(C) SEAL MATERIAL	(N) MATERIAL/COATING
X Standard Pilot	C 30 psi (2 bar)	N Buna-N	Standard Material/Coating
L Manual Load Release	E 75 psi (5 bar)	E EPDM	/AP Stainless Steel, Passivated
		V Viton	/LH Mild Steel, Zinc-Nickel



This valve is a pilot to open check valve. It has a sealed pilot, a steel seat, and is non-vented. It allows free flow from the valve (port 2) to the load (port 1) and blocks flow in the opposite direction. Pressure at the pilot (port 3) will open the valve from port 1 to port 2. Pilot pressure needed at port 3 to open the valve is directly proportional to the load pressure at port 1. Pressure at port 2 directly opposes pilot pressure.

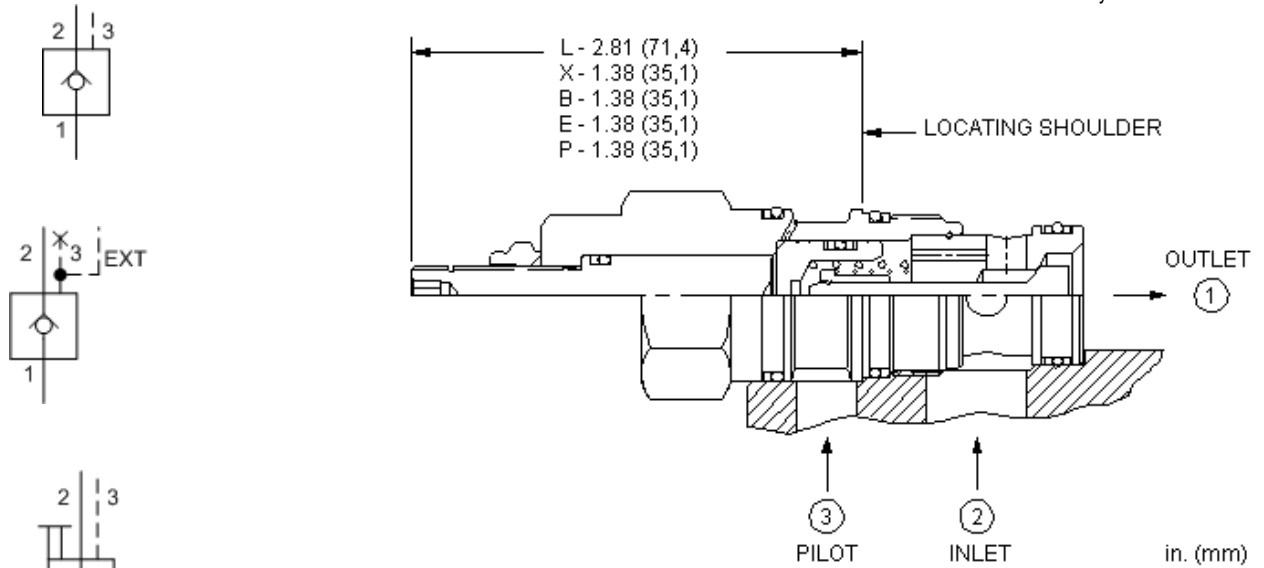
TECHNICAL DATA

NOTE: DATA MAY VARY BY CONFIGURATION. SEE CONFIGURATION SECTION.

Pilot Ratio	3:1
Maximum Operating Pressure	350 bar
Maximum Valve Leakage at 110 SUS (24 cSt)	0,07 cc/min.
Seal kit - Cartridge	Buna: 990011007
Seal kit - Cartridge	EPDM: 990011014
Seal kit - Cartridge	Polyurethane: 990011002
Seal kit - Cartridge	Viton: 990011006

CONFIGURATION OPTIONS
Model Code Example: CKCDXCN

CONTROL	(X) CRACKING PRESSURE	(C) SEAL MATERIAL	(N) MATERIAL/COATING
X Standard Pilot	C 30 psi (2 bar)	N Buna-N	Standard Material/Coating
L Manual Load Release	A 4 psi (0,3 bar)	E EPDM	/AP Stainless Steel, Passivated
	B 15 psi (1 bar)	V Viton	/LH Mild Steel, Zinc-Nickel
	D 50 psi (3,5 bar)		
	E 75 psi (5 bar)		
	F 100 psi (7 bar)		
	G 150 psi (10,5 bar)		



This valve is a pilot to open check valve. It has a sealed pilot, a steel seat, and is non-vented. It allows free flow from the valve (port 2) to the load (port 1) and blocks flow in the opposite direction. Pressure at the pilot (port 3) will open the valve from port 1 to port 2. Pilot pressure needed at port 3 to open the valve is directly proportional to the load pressure at port 1. Pressure at port 2 directly opposes pilot pressure.

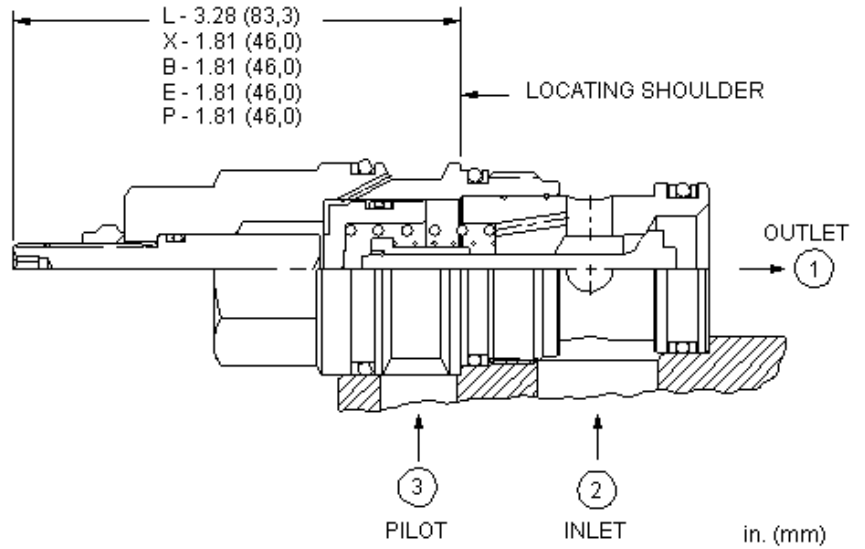
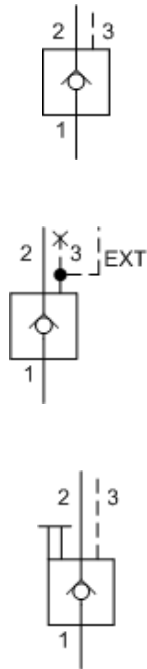
TECHNICAL DATA

NOTE: DATA MAY VARY BY CONFIGURATION. SEE CONFIGURATION SECTION.

Pilot Ratio	3:1
Maximum Operating Pressure	350 bar
Maximum Valve Leakage at 110 SUS (24 cSt)	0,07 cc/min.
Seal kit - Cartridge	Buna: 990202007
Seal kit - Cartridge	Polyurethane: 990002002
Seal kit - Cartridge	Viton: 990202006

CONFIGURATION OPTIONS
Model Code Example: CKEDXCN

CONTROL	(X) CRACKING PRESSURE	(C) SEAL MATERIAL	(N) MATERIAL/COATING
X Standard Pilot	C 30 psi (2 bar)	N Buna-N	Standard Material/Coating
L Manual Load Release	A 4 psi (0,3 bar)	V Viton	/AP Stainless Steel, Passivated
	B 15 psi (1 bar)		/LH Mild Steel, Zinc-Nickel
	D 50 psi (3,5 bar)		
	E 75 psi (5 bar)		
	F 100 psi (7 bar)		



This valve is a pilot to open check valve. It has a sealed pilot, a steel seat, and is non-vented. It allows free flow from the valve (port 2) to the load (port 1) and blocks flow in the opposite direction. Pressure at the pilot (port 3) will open the valve from port 1 to port 2. Pilot pressure needed at port 3 to open the valve is directly proportional to the load pressure at port 1. Pressure at port 2 directly opposes pilot pressure.

TECHNICAL DATA

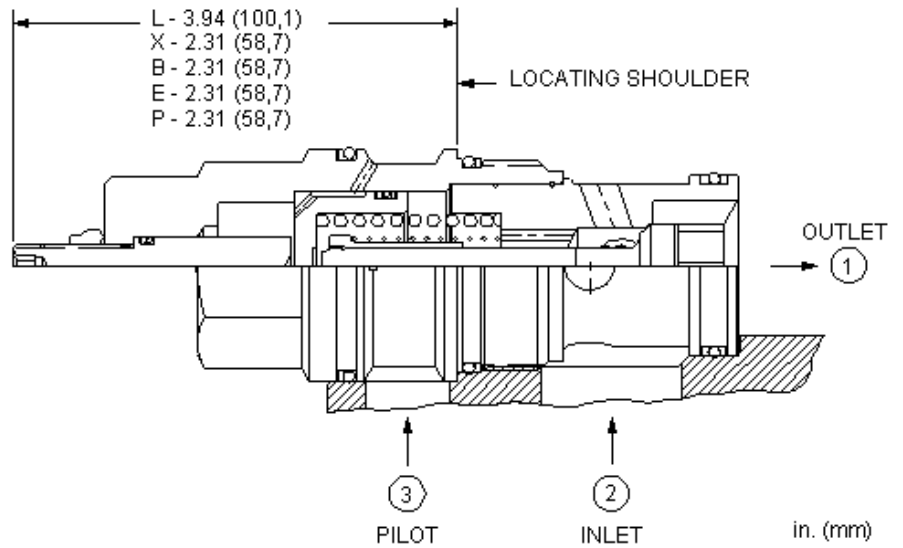
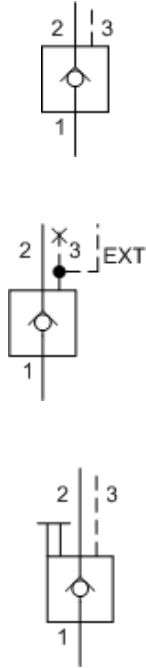
NOTE: DATA MAY VARY BY CONFIGURATION. SEE CONFIGURATION SECTION.

Pilot Ratio	3:1
Maximum Operating Pressure	350 bar
Maximum Valve Leakage at 110 SUS (24 cSt)	0,07 cc/min.
Seal kit - Cartridge	Buna: 990017007
Seal kit - Cartridge	EPDM: 990017014
Seal kit - Cartridge	Polyurethane: 990017002
Seal kit - Cartridge	Viton: 990017006

CONFIGURATION OPTIONS

Model Code Example: CKGD^XCN

CONTROL	(X) CRACKING PRESSURE	(C) SEAL MATERIAL	(N) MATERIAL/COATING
X Standard Pilot	C 30 psi (2 bar)	N Buna-N	Standard Material/Coating
L Manual Load Release	A 4 psi (0,3 bar)	E EPDM	/AP Stainless Steel, Passivated
	B 15 psi (1 bar)	V Viton	/LH Mild Steel, Zinc-Nickel
	D 50 psi (3,5 bar)		
	E 75 psi (5 bar)		
	F 100 psi (7 bar)		



This valve is a pilot to open check valve. It has a sealed pilot, a steel seat, and is non-vented. It allows free flow from the valve (port 2) to the load (port 1) and blocks flow in the opposite direction. Pressure at the pilot (port 3) will open the valve from port 1 to port 2. Pilot pressure needed at port 3 to open the valve is directly proportional to the load pressure at port 1. Pressure at port 2 directly opposes pilot pressure.

TECHNICAL DATA

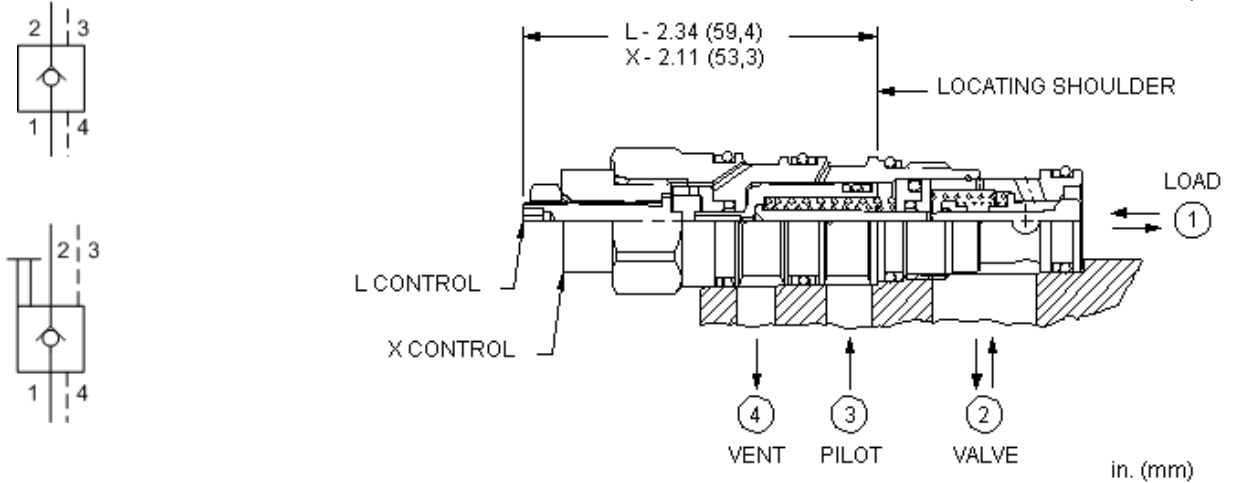
NOTE: DATA MAY VARY BY CONFIGURATION. SEE CONFIGURATION SECTION.

Pilot Ratio	3:1
Maximum Operating Pressure	350 bar
Maximum Valve Leakage at 110 SUS (24 cSt)	0,07 cc/min.
Seal kit - Cartridge	Buna: 990019007
Seal kit - Cartridge	Polyurethane: 990019002
Seal kit - Cartridge	Viton: 990019006

CONFIGURATION OPTIONS

Model Code Example: CKIDXCN

CONTROL	(X) CRACKING PRESSURE	(C) SEAL MATERIAL	(N) MATERIAL/COATING
X Standard Pilot	C 30 psi (2 bar)	N Buna-N	Standard Material/Coating
L Manual Load Release	A 4 psi (0,3 bar)	V Viton	/AP Stainless Steel, Passivated
	B 15 psi (1 bar)		/LH Mild Steel, Zinc-Nickel
	D 50 psi (3,5 bar)		
	E 75 psi (5 bar)		
	F 100 psi (7 bar)		



This valve is a pilot to open check valve. It has a sealed pilot, a steel seat, and is vented. It allows free flow from the valve (port 2) to the load (port 1) and blocks flow in the opposite direction. Pressure at the pilot (port 3) will open the valve from port 1 to port 2. Pilot pressure needed to open the valve is directly proportional to the load pressure at port 1. The valve is insensitive to pressure at port 2 because the spring chamber is referenced to the vent (port 4).

TECHNICAL DATA

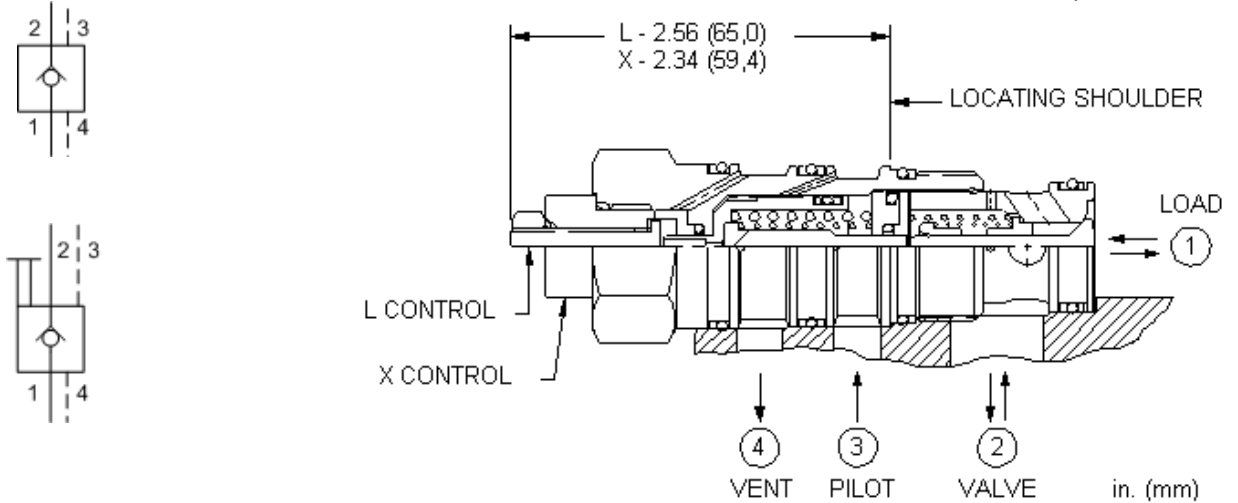
NOTE: DATA MAY VARY BY CONFIGURATION. SEE CONFIGURATION SECTION.

Pilot Ratio	3:1
Maximum Operating Pressure	350 bar
Maximum Valve Leakage at 110 SUS (24 cSt)	0,07 cc/min.
Seal kit - Cartridge	Buna: 990021007
Seal kit - Cartridge	EPDM: 990021014
Seal kit - Cartridge	Polyurethane: 990021002
Seal kit - Cartridge	Viton: 990021006

CONFIGURATION OPTIONS

Model Code Example: CVCVXCN

CONTROL	(X) CRACKING PRESSURE	(C) SEAL MATERIAL	(N) MATERIAL/COATING
X Standard Pilot	C 30 psi (2 bar)	N Buna-N	Standard Material/Coating
L Manual Load Release	A 4 psi (0,3 bar)	E EPDM	/AP Stainless Steel, Passivated
	B 15 psi (1 bar)	V Viton	/LH Mild Steel, Zinc-Nickel
	D 50 psi (3,5 bar)		
	E 75 psi (5 bar)		
	F 100 psi (7 bar)		



This valve is a pilot to open check valve. It has a sealed pilot, a steel seat, and is vented. It allows free flow from the valve (port 2) to the load (port 1) and blocks flow in the opposite direction. Pressure at the pilot (port 3) will open the valve from port 1 to port 2. Pilot pressure needed to open the valve is directly proportional to the load pressure at port 1. The valve is insensitive to pressure at port 2 because the spring chamber is referenced to the vent (port 4).

TECHNICAL DATA

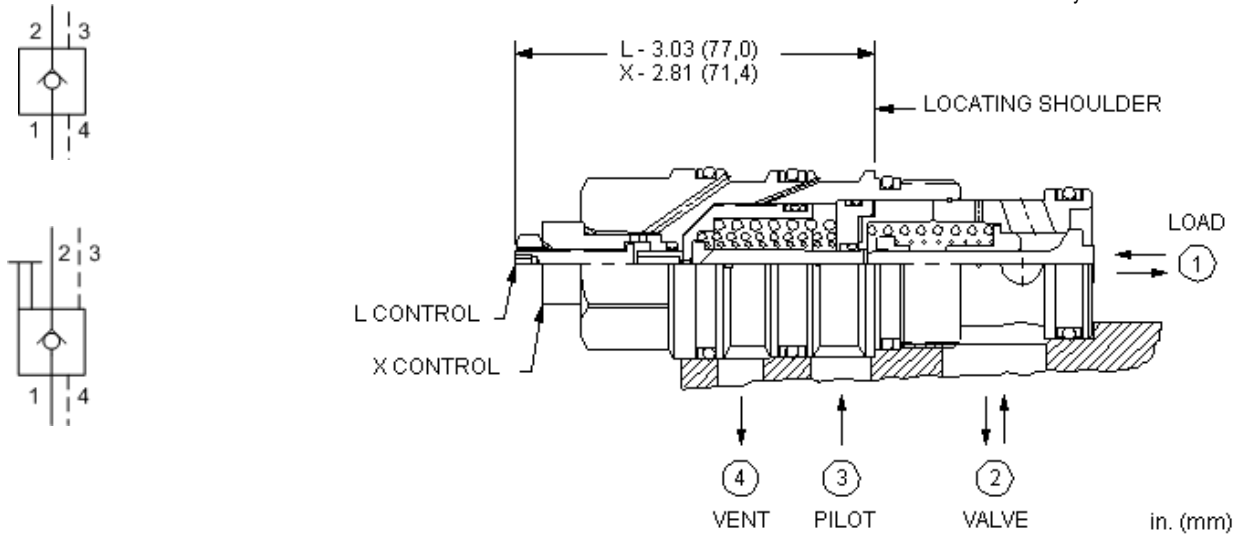
NOTE: DATA MAY VARY BY CONFIGURATION. SEE CONFIGURATION SECTION.

Pilot Ratio	3:1
Maximum Operating Pressure	350 bar
Maximum Valve Leakage at 110 SUS (24 cSt)	0,07 cc/min.
Seal kit - Cartridge	Buna: 990022007
Seal kit - Cartridge	Polyurethane: 990022002
Seal kit - Cartridge	Viton: 990022006

CONFIGURATION OPTIONS

Model Code Example: CVEVXCN

CONTROL	(X) CRACKING PRESSURE	(C) SEAL MATERIAL	(N) MATERIAL/COATING
X Standard Pilot	C 30 psi (2 bar)	N Buna-N	Standard Material/Coating
L Manual Load Release	A 4 psi (0,3 bar)	E EPDM	/AP Stainless Steel, Passivated
	B 15 psi (1 bar)	V Viton	/LH Mild Steel, Zinc-Nickel
	D 50 psi (3,5 bar)		
	E 75 psi (5 bar)		
	F 100 psi (7 bar)		



This valve is a pilot to open check valve. It has a sealed pilot, a steel seat, and is vented. It allows free flow from the valve (port 2) to the load (port 1) and blocks flow in the opposite direction. Pressure at the pilot (port 3) will open the valve from port 1 to port 2. Pilot pressure needed to open the valve is directly proportional to the load pressure at port 1. The valve is insensitive to pressure at port 2 because the spring chamber is referenced to the vent (port 4).

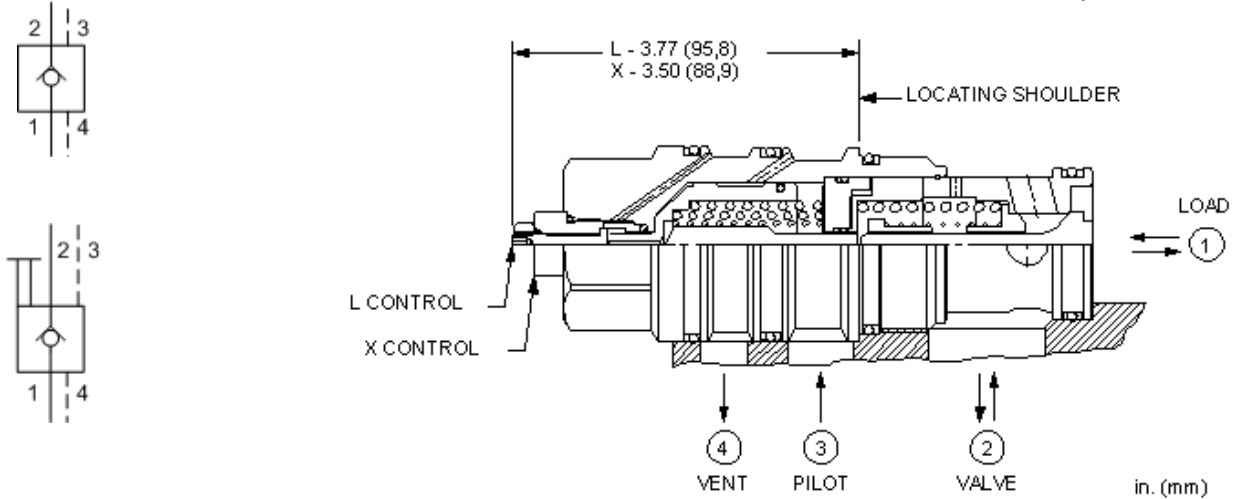
TECHNICAL DATA

NOTE: DATA MAY VARY BY CONFIGURATION. SEE CONFIGURATION SECTION.

Pilot Ratio	3:1
Maximum Operating Pressure	350 bar
Maximum Valve Leakage at 110 SUS (24 cSt)	0,07 cc/min.
Seal kit - Cartridge	Buna: 990023007
Seal kit - Cartridge	Polyurethane: 990023002
Seal kit - Cartridge	Viton: 990023006

CONFIGURATION OPTIONS
Model Code Example: CVGVXCN

CONTROL	(X) CRACKING PRESSURE	(C) SEAL MATERIAL	(N) MATERIAL/COATING
X Standard Pilot	C 30 psi (2 bar)	N Buna-N	Standard Material/Coating
L Manual Load Release	A 4 psi (0,3 bar)	V Viton	/AP Stainless Steel, Passivated
	B 15 psi (1 bar)		/LH Mild Steel, Zinc-Nickel
	D 50 psi (3,5 bar)		
	E 75 psi (5 bar)		
	F 100 psi (7 bar)		



This valve is a pilot to open check valve. It has a sealed pilot, a steel seat, and is vented. It allows free flow from the valve (port 2) to the load (port 1) and blocks flow in the opposite direction. Pressure at the pilot (port 3) will open the valve from port 1 to port 2. Pilot pressure needed to open the valve is directly proportional to the load pressure at port 1. The valve is insensitive to pressure at port 2 because the spring chamber is referenced to the vent (port 4).

TECHNICAL DATA

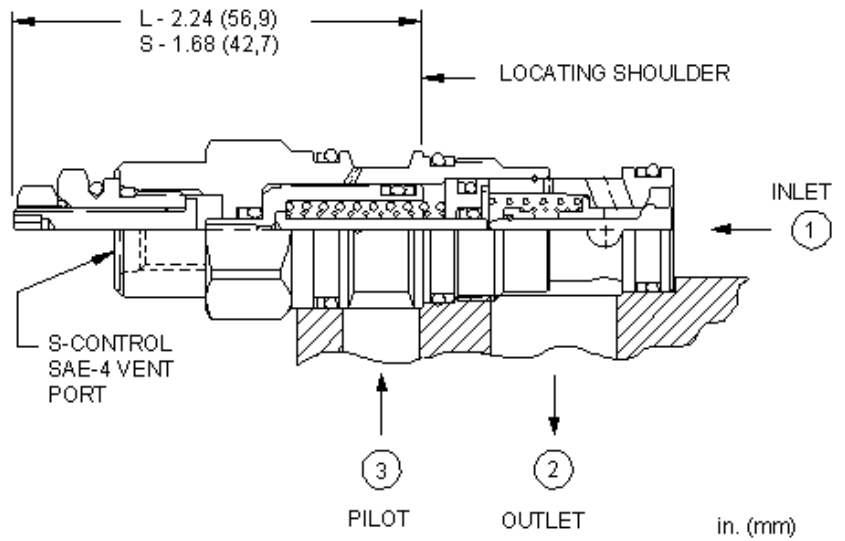
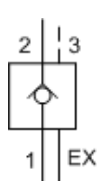
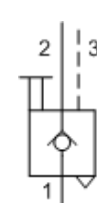
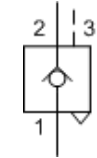
NOTE: DATA MAY VARY BY CONFIGURATION. SEE CONFIGURATION SECTION.

Pilot Ratio	3:1
Maximum Operating Pressure	350 bar
Maximum Valve Leakage at 110 SUS (24 cSt)	0,07 cc/min.
Pilot Volume Displacement	4,9 cc
Pilot Passage into Valve	2,3 mm
Seal kit - Cartridge	Buna: 990024007
Seal kit - Cartridge	EPDM: 990024014
Seal kit - Cartridge	Polyurethane: 990024002
Seal kit - Cartridge	Viton: 990024006

CONFIGURATION OPTIONS

Model Code Example: CVIVXCN

CONTROL	(X) CRACKING PRESSURE	(C) SEAL MATERIAL	(N) MATERIAL/COATING
X Standard Pilot	C 30 psi (2 bar)	N Buna-N	Standard Material/Coating
L Manual Load Release	A 4 psi (0,3 bar) B 15 psi (1 bar) D 50 psi (3,5 bar) E 75 psi (5 bar) F 100 psi (7 bar)	V Viton	/AP Stainless Steel, Passivated /LH Mild Steel, Zinc-Nickel



This valve is a pilot to open check valve. It has a sealed pilot, a steel seat, and is vented. It allows free flow from the valve (port 2) to the load (port 1) and blocks flow in the opposite direction. Pressure at the pilot (port 3) pilot port will open the valve from port 1 to port 2. Pilot pressure needed to open the valve is directly proportional to the load pressure at port 1. The valve is insensitive to pressure at port 2 because the spring chamber is referenced out the back of the hex body.

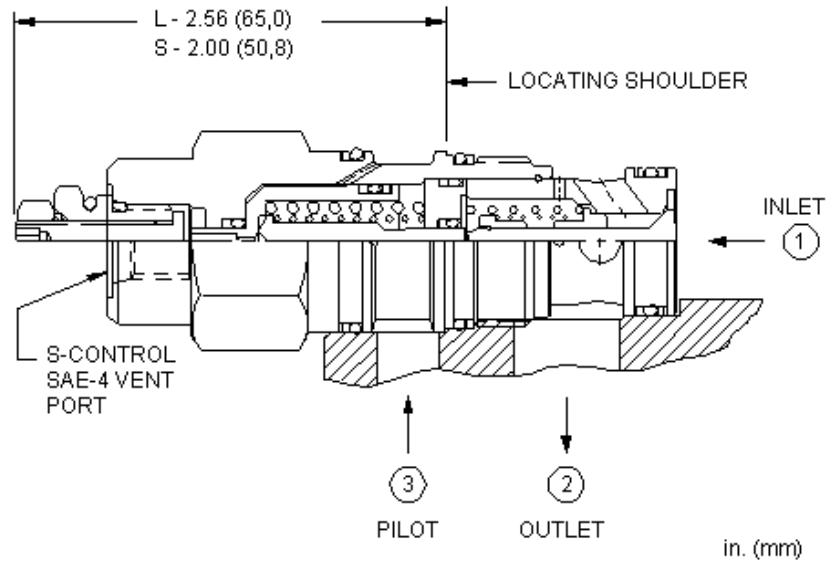
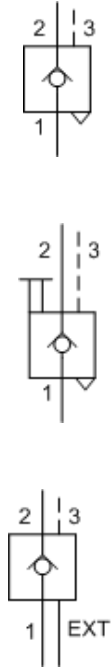
TECHNICAL DATA

NOTE: DATA MAY VARY BY CONFIGURATION. SEE CONFIGURATION SECTION.

Pilot Ratio	3:1
Maximum Operating Pressure	350 bar
Maximum Valve Leakage at 110 SUS (24 cSt)	0,07 cc/min.
Seal kit - Cartridge	Buna: 990311007
Seal kit - Cartridge	Polyurethane: 990011002
Seal kit - Cartridge	Viton: 990311006

CONFIGURATION OPTIONS
Model Code Example: CKCVXCN

CONTROL	(X) CRACKING PRESSURE	(C) SEAL MATERIAL	(N) MATERIAL/COATING
X Standard Pilot, Atmospheric Vent	C 30 psi (2 bar)	N Buna-N	Standard Material/Coating
S External 4-SAE Vent Port	A 4 psi (0,3 bar)	V Viton	/AP Stainless Steel, Passivated
	B 15 psi (1 bar)		/LH Mild Steel, Zinc-Nickel
	D 50 psi (3,5 bar)		
	E 75 psi (5 bar)		
	F 100 psi (7 bar)		



This valve is a pilot to open check valve. It has a sealed pilot, a steel seat, and is vented. It allows free flow from the valve (port 2) to the load (port 1) and blocks flow in the opposite direction. Pressure at the pilot (port 3) pilot port will open the valve from port 1 to port 2. Pilot pressure needed to open the valve is directly proportional to the load pressure at port 1. The valve is insensitive to pressure at port 2 because the spring chamber is referenced out the back of the hex body.

TECHNICAL DATA

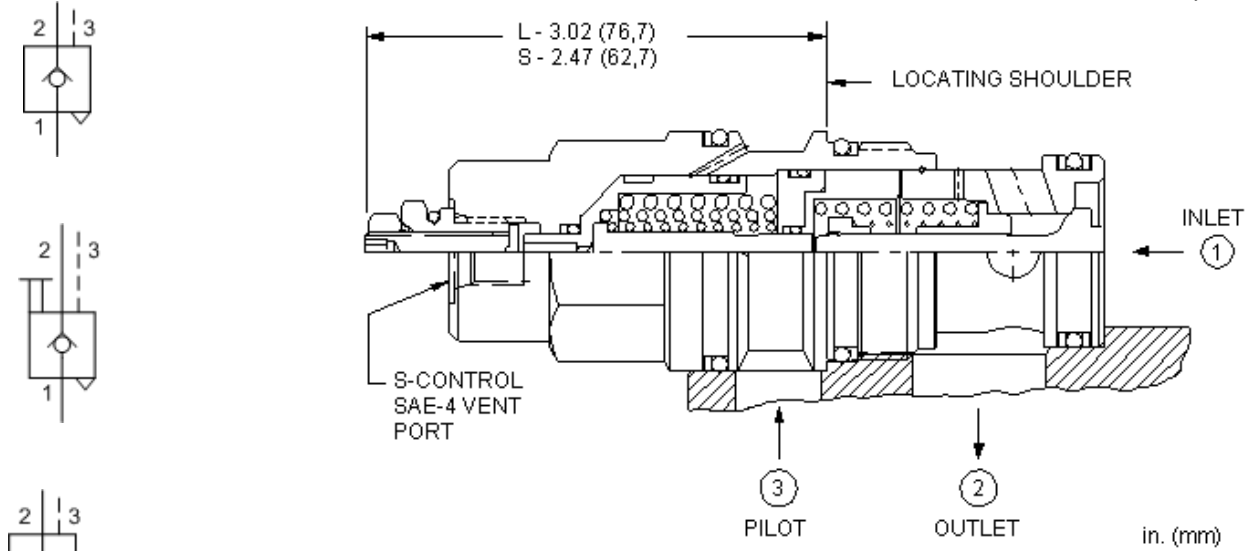
NOTE: DATA MAY VARY BY CONFIGURATION. SEE CONFIGURATION SECTION.

Pilot Ratio	3:1
Maximum Operating Pressure	350 bar
Maximum Valve Leakage at 110 SUS (24 cSt)	0,07 cc/min.
Seal kit - Cartridge	Buna: 990202007
Seal kit - Cartridge	Polyurethane: 990002002
Seal kit - Cartridge	Viton: 990202006

CONFIGURATION OPTIONS

Model Code Example: CKEVXCN

CONTROL	(X)	CRACKING PRESSURE	(C)	SEAL MATERIAL	(N)
X Standard Pilot, Atmospheric Vent		C 30 psi (2 bar)		N Buna-N	
S External 4-SAE Vent Port		A 4 psi (0,3 bar)		V Viton	
		B 15 psi (1 bar)			
		D 50 psi (3,5 bar)			
		E 75 psi (5 bar)			
		F 100 psi (7 bar)			



This valve is a pilot to open check valve. It has a sealed pilot, a steel seat, and is vented. It allows free flow from the valve (port 2) to the load (port 1) and blocks flow in the opposite direction. Pressure at the pilot (port 3) pilot port will open the valve from port 1 to port 2. Pilot pressure needed to open the valve is directly proportional to the load pressure at port 1. The valve is insensitive to pressure at port 2 because the spring chamber is referenced out the back of the hex body.

TECHNICAL DATA

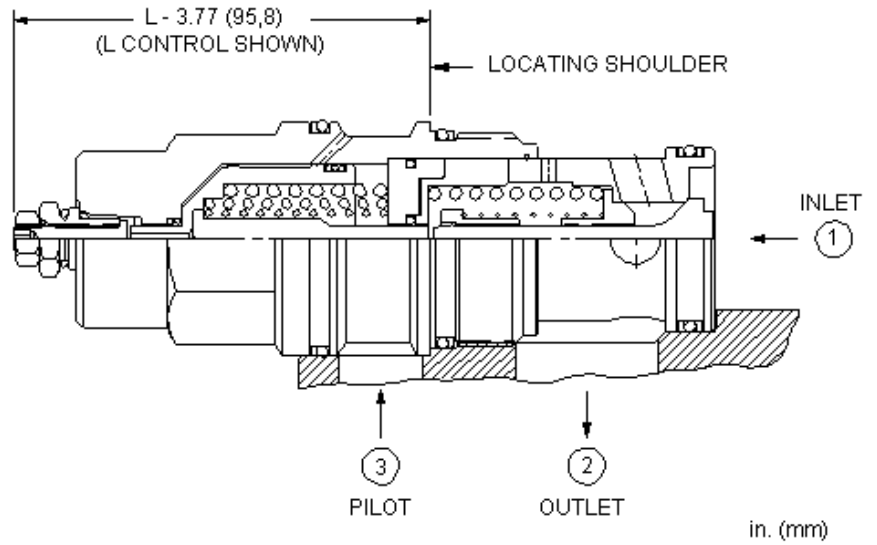
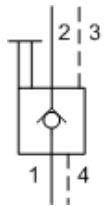
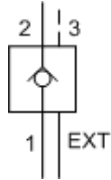
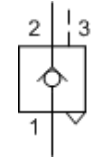
NOTE: DATA MAY VARY BY CONFIGURATION. SEE CONFIGURATION SECTION.

Pilot Ratio	3:1
Maximum Operating Pressure	350 bar
Maximum Valve Leakage at 110 SUS (24 cSt)	0,07 cc/min.
Seal kit - Cartridge	Buna: 990017007
Seal kit - Cartridge	Polyurethane: 990017002
Seal kit - Cartridge	Viton: 990017006

CONFIGURATION OPTIONS

Model Code Example: CKGVXCN

CONTROL	(X) CRACKING PRESSURE	(C) SEAL MATERIAL	(N) MATERIAL/COATING
X Standard Pilot, Atmospheric Vent	C 30 psi (2 bar)	N Buna-N	Standard Material/Coating
S External 4-SAE Vent Port	A 4 psi (0,3 bar)	V Viton	/AP Stainless Steel, Passivated
	B 15 psi (1 bar)		
	D 50 psi (3,5 bar)		
	E 75 psi (5 bar)		
	F 100 psi (7 bar)		



This valve is a pilot to open check valve. It has a sealed pilot, a steel seat, and is vented. It allows free flow from the valve (port 2) to the load (port 1) and blocks flow in the opposite direction. Pressure at the pilot (port 3) pilot port will open the valve from port 1 to port 2. Pilot pressure needed to open the valve is directly proportional to the load pressure at port 1. The valve is insensitive to pressure at port 2 because the spring chamber is referenced out the back of the hex body.

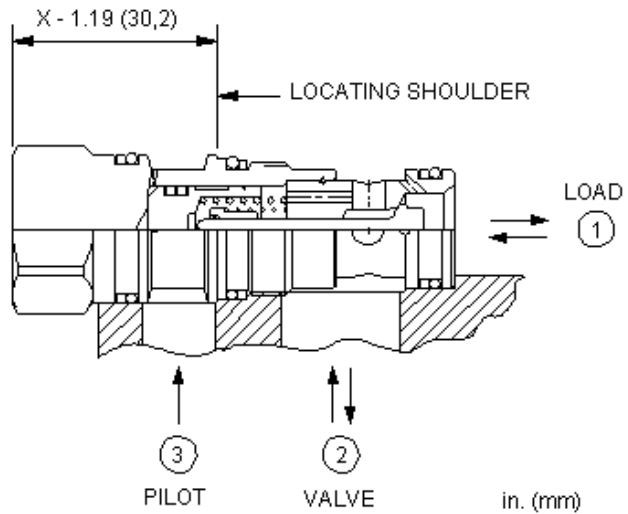
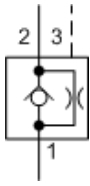
TECHNICAL DATA

NOTE: DATA MAY VARY BY CONFIGURATION. SEE CONFIGURATION SECTION.

Pilot Ratio	3:1
Maximum Operating Pressure	350 bar
Maximum Valve Leakage at 110 SUS (24 cSt)	0,07 cc/min.
Seal kit - Cartridge	Buna: 990019007
Seal kit - Cartridge	Polyurethane: 990019002
Seal kit - Cartridge	Viton: 990019006

CONFIGURATION OPTIONS
Model Code Example: CKIVXCN

CONTROL	(X) CRACKING PRESSURE	(C) SEAL MATERIAL	(N) MATERIAL/COATING
X Standard Pilot, Atmospheric Vent	C 30 psi (2 bar)	N Buna-N	Standard Material/Coating
S External 4-SAE Vent Port	A 4 psi (0,3 bar)	V Viton	/AP Stainless Steel, Passivated
	B 15 psi (1 bar)		
	D 50 psi (3,5 bar)		
	E 75 psi (5 bar)		
	F 100 psi (7 bar)		



This valve is a pilot to open check valve with a bypass orifice. It incorporates a sealed pilot, a steel seat, and is non-vented. It allows free flow from the valve (port 2) to the load (port 1) and restricts flow in the opposite direction. Pressure at the pilot (port 3) will open the valve from port 1 to port 2. The pilot pressure needed at port 3 to open the valve is directly proportional to the load pressure at port 1. Pressure at port 2 directly opposes the pilot pressure. Note: The bypass orifice diameter is specified by the customer. See Technical Data below for the allowable orifice range.

TECHNICAL DATA

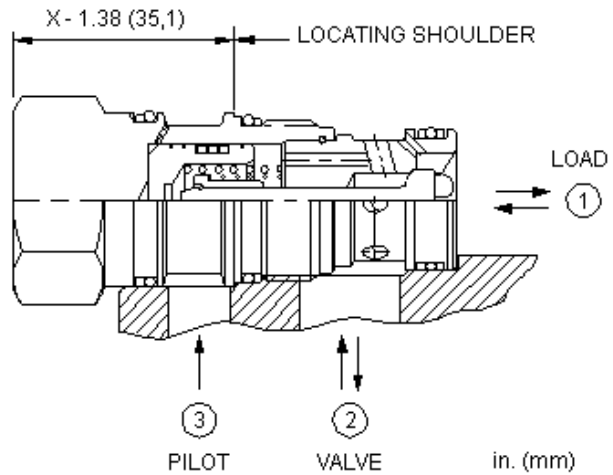
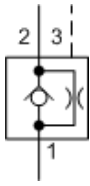
NOTE: DATA MAY VARY BY CONFIGURATION. SEE CONFIGURATION SECTION.

Pilot Ratio	3:1
Maximum Operating Pressure	350 bar
Orifice Range	0,4 - 3,9 mm
Seal kit - Cartridge	Buna: 990011007
Seal kit - Cartridge	Polyurethane: 990011002
Seal kit - Cartridge	Viton: 990011006

CONFIGURATION OPTIONS

Model Code Example: CNCEXCN

CONTROL	(X) SETTING RANGE	(C) SEAL MATERIAL	(N) MATERIAL/COATING
X Not Adjustable	C 30 psi (2 bar) Cracking Pressure, .016 - .153 in. (0,4 - 3,9 mm) A 4 psi (0,3 bar) Cracking Pressure, .016 - .153 in. (0,4 - 3,9 mm) B 15 psi (1 bar) Cracking Pressure, .016 - .153 in. (0,4 - 3,9 mm) D 50 psi (3,5 bar) Cracking Pressure, .016 - .153 in. (0,4 - 3,9 mm) E 75 psi (5 bar) Cracking Pressure, .016 - .153 in. (0,4 - 3,9 mm) F 100 psi (7 bar) Cracking Pressure, .016 - .153 in. (0,4 - 3,9 mm)	N Buna-N V Viton	Standard Material/Coating /AP Stainless Steel, Passivated /LH Mild Steel, Zinc-Nickel



This valve is a pilot to open check valve with a bypass orifice. It incorporates a sealed pilot, a steel seat, and is non-vented. It allows free flow from the valve (port 2) to the load (port 1) and restricts flow in the opposite direction. Pressure at the pilot (port 3) will open the valve from port 1 to port 2. The pilot pressure needed at port 3 to open the valve is directly proportional to the load pressure at port 1. Pressure at port 2 directly opposes the pilot pressure. Note: The bypass orifice diameter is specified by the customer. See Technical Data below for the allowable orifice range.

TECHNICAL DATA

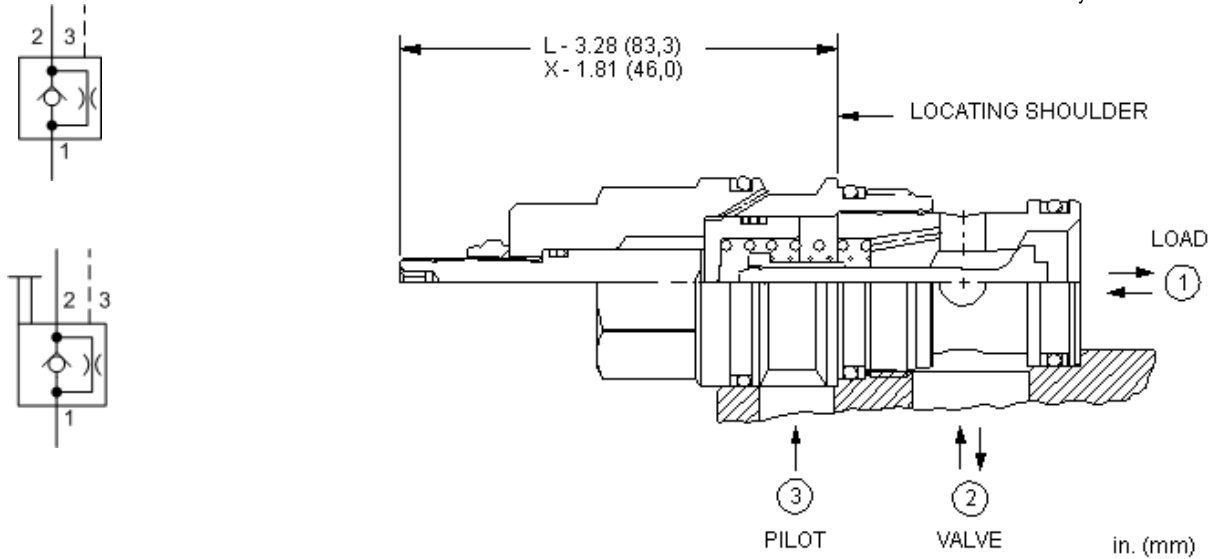
NOTE: DATA MAY VARY BY CONFIGURATION. SEE CONFIGURATION SECTION.

Pilot Ratio	3:1
Maximum Operating Pressure	350 bar
Orifice Range	0,4 - 3,4 mm
Seal kit - Cartridge	Buna: 990202007
Seal kit - Cartridge	Polyurethane: 990002002
Seal kit - Cartridge	Viton: 990202006

CONFIGURATION OPTIONS

Model Code Example: CNEEXCN

CONTROL	(X)	SETTING RANGE	(C)	SEAL MATERIAL	(N)
X Not Adjustable		C 30 psi (2 bar) Cracking Pressure, .016 - .135 in. (0,4 - 3,4 mm)		N Buna-N V Viton	
		A 4 psi (0,3 bar) Cracking Pressure, .016 - .135 in. (0,4 - 3,4 mm)			
		B 15 psi (1 bar) Cracking Pressure, .016 - .135 in. (0,4 - 3,4 mm)			
		D 50 psi (3,5 bar) Cracking Pressure, .016 - .135 in. (0,4 - 3,4 mm)			
		E 75 psi (5 bar) Cracking Pressure, .016 - .135 in. (0,4 - 3,4 mm)			
		F 100 psi (7 bar) Cracking Pressure, .016 - .135 in. (0,4 - 3,4 mm)			



This valve is a pilot to open check valve with a bypass orifice. It incorporates a sealed pilot, a steel seat, and is non-vented. It allows free flow from the valve (port 2) to the load (port 1) and restricts flow in the opposite direction. Pressure at the pilot (port 3) will open the valve from port 1 to port 2. The pilot pressure needed at port 3 to open the valve is directly proportional to the load pressure at port 1. Pressure at port 2 directly opposes the pilot pressure. Note: The bypass orifice diameter is specified by the customer. See Technical Data below for the allowable orifice range. An 'L' control option is available to manually release the load. See Option Selection below.

TECHNICAL DATA

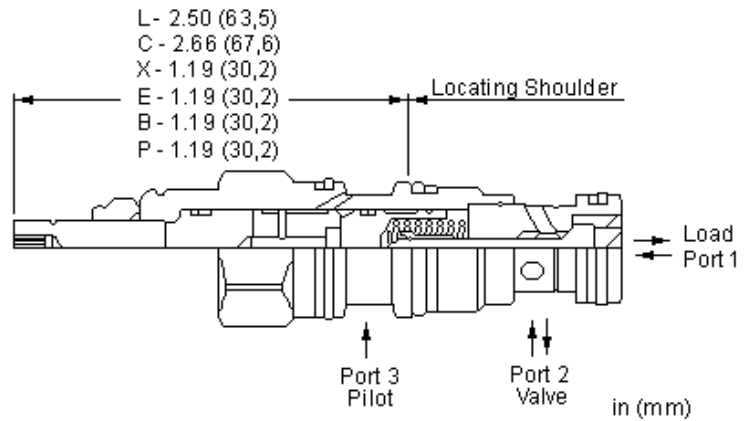
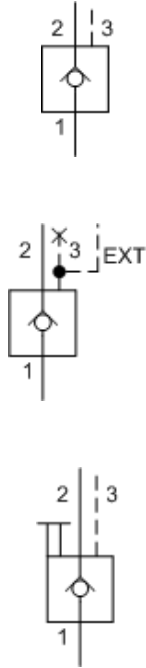
NOTE: DATA MAY VARY BY CONFIGURATION. SEE CONFIGURATION SECTION.

Pilot Ratio	3:1
Maximum Operating Pressure	350 bar
Orifice Range	0,4 - 5,5 mm
Seal kit - Cartridge	Buna: 990017007
Seal kit - Cartridge	Polyurethane: 990017002
Seal kit - Cartridge	Viton: 990017006

CONFIGURATION OPTIONS

Model Code Example: CNGEXCN

CONTROL	(X) SETTING RANGE	(C) SEAL MATERIAL	(N)
X Not Adjustable	C 30 psi (2 bar) Cracking Pressure, .016 - .218 in. (0,4 - 5,5 mm)	N Buna-N	N
	A 4 psi (0,3 bar) Cracking Pressure, .016 - .218 in. (0,4 - 5,5 mm)	V Viton	
	B 15 psi (1 bar) Cracking Pressure, .016 - .218 in. (0,4 - 5,5 mm)		
	D 50 psi (3,5 bar) Cracking Pressure, .016 - .218 in. (0,4 - 5,5 mm)		
	E 75 psi (5 bar) Cracking Pressure, .016 - .218 in. (0,4 - 5,5 mm)		
	F 100 psi (7 bar) Cracking Pressure, .016 - .218 in. (0,4 - 5,5 mm)		



This valve is a pilot to open check valve. It has a non-sealed pilot, a steel seat, and is non-vented. It allows free flow from the valve (port 2) to the load (port 1) and blocks flow in the opposite direction. Pressure at the pilot (port 3) will open the valve from port 1 to port 2. Pilot pressure needed at port 3 to open the valve is directly proportional to the load pressure at port 1. Pressure at port 2 directly opposes pilot pressure.

TECHNICAL DATA

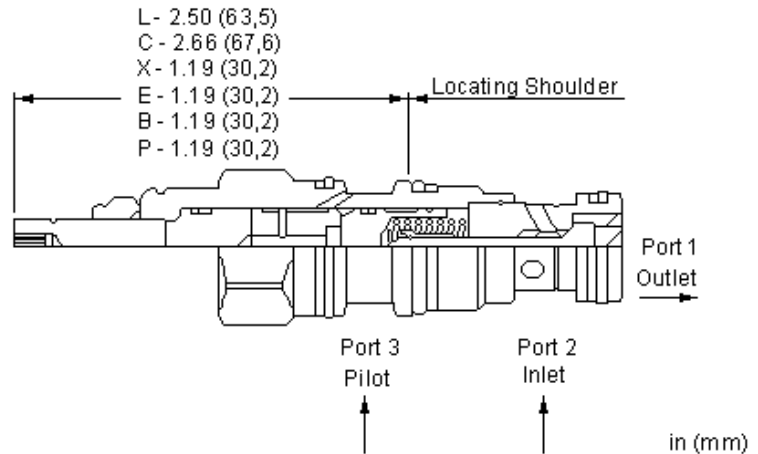
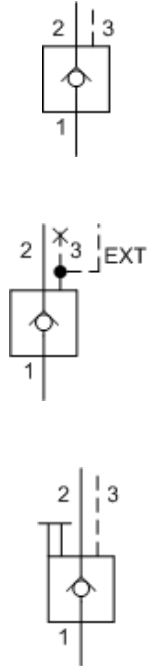
NOTE: DATA MAY VARY BY CONFIGURATION. SEE CONFIGURATION SECTION.

Pilot Ratio	5:1
Maximum Operating Pressure	350 bar
Maximum Valve Leakage at 110 SUS (24 cSt)	0,07 cc/min.
Seal kit - Cartridge	Buna: 990011007
Seal kit - Cartridge	Polyurethane: 990011002
Seal kit - Cartridge	Viton: 990011006

CONFIGURATION OPTIONS

Model Code Example: CKCRXCN

CONTROL	(X)	CRACKING PRESSURE	(C)	SEAL MATERIAL	(N)	MATERIAL/COATING
X Standard Pilot		C 30 psi (2 bar)		N Buna-N		Standard Material/Coating
B External 1/4 BSPP Pilot Port, Port 3 blocked		A 4 psi (0,3 bar)		V Viton		/AP Stainless Steel, Passivated
C Manual Load Release - Tamper Resistant		B 15 psi (1 bar)				/LH Mild Steel, Zinc-Nickel
E External 4-SAE Pilot Port, Port 3 Blocked		D 50 psi (3,5 bar)				
L Manual Load Release		E 75 psi (5 bar)				
P External 1/4 NPTF Pilot Port, Port 3 Blocked		F 100 psi (7 bar)				
		Z 1 psi (0,07 bar)				



This valve is a pilot to open check valve. It has a sealed pilot, a steel seat, and is non-vented. It allows free flow from the valve (port 2) to the load (port 1) and blocks flow in the opposite direction. Pressure at the pilot (port 3) will open the valve from port 1 to port 2. Pilot pressure needed at port 3 to open the valve is directly proportional to the load pressure at port 1. Pressure at port 2 directly opposes pilot pressure.

TECHNICAL DATA

NOTE: DATA MAY VARY BY CONFIGURATION. SEE CONFIGURATION SECTION.

Pilot Ratio	5:1
Maximum Operating Pressure	350 bar
Maximum Valve Leakage at 110 SUS (24 cSt)	0,07 cc/min.
Seal kit - Cartridge	Buna: 990011007
Seal kit - Cartridge	Viton: 990011006

CONFIGURATION OPTIONS
Model Code Example: CKCSXCN

CONTROL	(X)	CRACKING PRESSURE	(C)	SEAL MATERIAL	(N)
X Standard Pilot		C 30 psi (2 bar)		N Buna-N	
B External 1/4 BSPP Pilot Port, Port 3 blocked		A 4 psi (0,3 bar)		V Viton	
C Manual Load Release - Tamper Resistant		B 15 psi (1 bar)			
E External 4-SAE Pilot Port, Port 3 Blocked		D 50 psi (3,5 bar)			
L Manual Load Release		E 75 psi (5 bar)			
P External 1/4 NPTF Port, Port 3 blocked		F 100 psi (7 bar)			
		Z 1 psi (0,07 bar)			

smart SOLUTIONS for DEMANDING applications



www.sunhydraulics.com

Sun Hydraulics Headquarters
Sarasota, Florida USA
+1 941 362 1200

Sun Hydraulics Limited
Coventry England
+44 2476 217 400
sales@sunuk.com

Sun Hydraulik GmbH
Erkelenz Germany
+49 2431 80910
sales@sunhydraulik.de

Sun Hydraulics Corp. (India)
Bangalore India
+91 8028 456325
sunindiainfo@sunhydraulics.com

Sun Hydraulics Korea Corp.
Incheon Korea
+82 3281 31350
sales@sunhydraulics.co.kr

Sun Hydraulics China Co. Ltd.
Shanghai P.R. China
+86 2162 375885
sunchinainfo@sunhydraulics.com

Sun Hydraulics Corp. (S.America)
Rosario, Argentina
+54 9 341 584 3075
ventas@sunhydraulics.com